



LESS IS MORE

Sleek storage and clever design ideas have had a space-enhancing effect in this small bathroom.

Cecilia Persson, 46, and her husband, Paul Goodwin, 51, live in an Edwardian end of terrace in Hove, East Sussex. When it came to updating their bathroom, the couple decided to replace the bath with a luxurious shower enclosure.

CONTINUED OVER NEXT PAGE



CONCEALED LOO
The loo has been repositioned and is now neatly tucked away behind the false wall

BASINS
Fine porcelain rectangular basins mirror the countertop and lead the eye to the end of the room



BEFORE



ACTION PLAN

- FIND A LOCAL DESIGNER
- REPLACE THE BATH WITH A LARGE SHOWER
- MAKE SPACE FOR HIS AND HERS BASINS
- INCLUDE BUILT-IN STORAGE



TOWEL RADIATOR
The couple's existing towel rail now fits snugly between the shower and door



HIDDEN STORAGE
Mirrored doors are a practical way of concealing storage

HOUSE BEAUTIFUL SAYS...

‘Creative use of space means a huge shower and plenty of hidden storage has been incorporated, and a feature floor adds a striking finishing touch’

What was wrong with the bathroom?

It was last refurbished in 1999, so it was in need of an update. We have a guest shower room and we found that we were using that more often, simply because a shower is quicker and more convenient.

Did you have help from a designer?

Yes, we wanted to employ a local firm and The Brighton Bathroom Company stood out, as we liked the gallery of work shown on their website. When we visited the showroom, the head of design, Louise Home, was very impressive and on our wavelength from the start. We set a budget of £10,000, excluding the building costs.

What did you have in mind?

I wanted simple, clean lines for a relaxing effect. We decided to ditch the bath for a walk-in shower and include a ‘his and hers’ vanity unit. We also wanted the loo tucked out of sight.

Tell us about the new layout

Louise listened to our ideas and designed a layout that made it all come alive. She suggested building a wide stud wall to house the shower controls, a shelf recess and shelves, which are concealed behind a mirrored door. It also hides the loo from view.

What space-saving solutions are included?

The underfloor heating, which makes the tiles feel warm underfoot. Our old towel radiator was slotted in next to the shower enclosure,

which created space for the double vanity unit. We went for open shelving beneath the basins to make the room look bigger. There's now plenty of storage in our bathroom.

Describe the colour scheme

We kept the painted walls neutral and chose green-honed slate tiles that wrap around the shower and stud wall. I wanted a statement floor and love the Dandelion design encaustic tiles.

How important was the lighting?

We gave a lot of thought to this element. In addition to the downlights in the ceiling, there are soft white LEDs under the basin cabinets, which are discreet and provide mood lighting. The slate tiles make the shower area dark, which is relaxing, but including LED lights within the alcoves illuminates the cubicle.

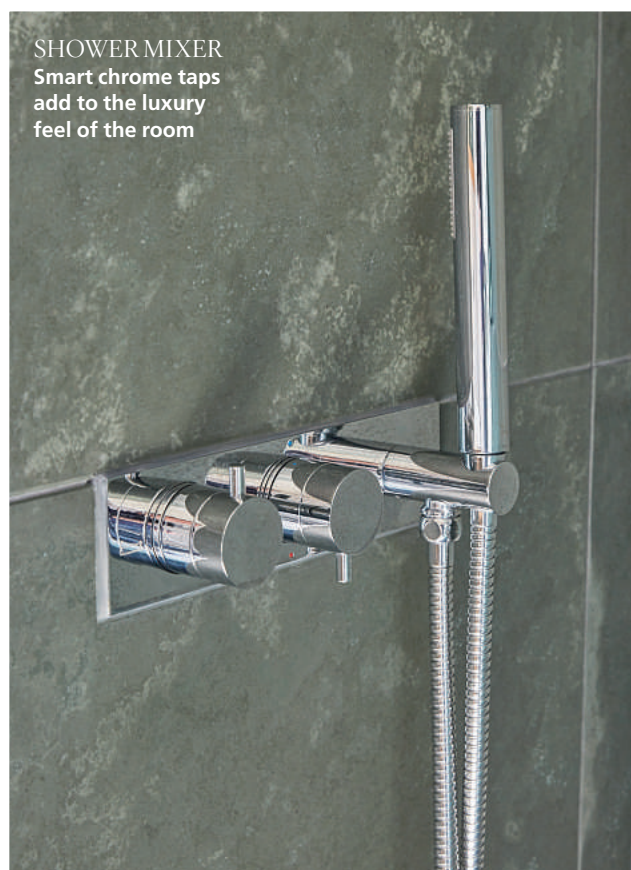
Is there anything you'd change?

I might consider a different material for the vanity countertop. We wanted something natural and chose wood, which adds warmth, but it needs to be oiled regularly to keep it looking good.

Did you learn anything from the process?

It's worth employing a company that specialises in bathrooms to translate your ideas into a workable design. I admit that adding a stud wall to our tiny space would be the last thing we'd have considered. Designers come up with amazing solutions.

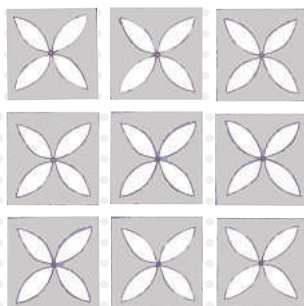
CONTINUED OVER PAGE

IN
DETAIL

GET THE LOOK



Dee Hardwicke
Pebble Grey
Lattice **vinyl**
tiles, £44.80
a sq metre,
Harvey Maria



Blomus Stotz
stainless
steel **soap**
dispenser,
£37, Black
By Design



Close Up **mirror** in natural
oak, £69, Abode Living

WHAT IT COST

Paint	£43
Underfloor heating	£375
WC	£812
Shower area	£2,749
Vanity area	£3,275
Floor and wall tiles	£1,596
Total	£8,850

THE NEW LOOK

Swapping the bath for a shower and repositioning the loo meant there was space for a large vanity area with two basins



SHOPPING LIST

Walls painted in Skimming Stone modern emulsion, £43.50 for 2.5L, Farrow & Ball. Crosswater Mike Pro **basin fillers**, £249 each; Bauhaus **waste**, £84; Bauhaus **bottle trap**, £106; Laufen Living **basins**, £399 each; Crosswater Pro wall **soap dispenser**, £69; **oak worktops**, £418.50; Bespoke **shelves** for wall mount, £360; Bespoke **glass splashback**, £194.50; RR Stone Cumbria Lonsdale green honed **slate tiles**, 400 x 600mm, £54 a sq metre; Demosaica bespoke Encaustic **Dandelion tiles**, 200 x 200 x 15mm, from £50 a sq metre; Crosswater Mike Pro Thermostatic **shower valve**, £495; Crosswater Mike Pro **shower head**, 200mm, £129; Crosswater **shower arm**, £66; Merlyn 10 Series **sliding door**, 1400mm, £1,442; Merlyn Truestone **shower tray**, 1400 x 800mm, £617; Roper Rhodes Equinox **glass door cabinet**, £232.50; Duravit ME by Starck **wall-mounted WC**, £284; Duravit ME by Starck **WC seat and cover**, £131; Geberit Duofix **WC frame**, £337; Geberit Sigma01 **dual-flush plate**, £60; KBB Lighting IP65 **downlights**, £82.80; GU10 6W dimmable **LEDs**, £149; Warmup **underfloor heating**, £375; all supplied by The Brighton Bathroom Company. Homeowner's existing **towel rail** **HB**